



# Internet Security 2012

Documentation for the training courses

## What is Kaspersky Internet Security 2012

Online course:

<http://support.kaspersky.com/kis2012/ecourse>

## Table of Contents

Introduction .....	2
What is Kaspersky Internet Security 2012 .....	2
Key functions and advantages .....	2
What's new in Kaspersky Internet Security 2012 .....	2
Distribution kit.....	15
Service for registered users.....	15

## Introduction

### What is Kaspersky Internet Security 2012

**Kaspersky Internet Security 2012** has everything that you need to stay safe and secure while you're surfing the web. It provides constant protection for you and your family – whether you work, bank, shop or play online.

#### Key functions and advantages

- ▶ **Proactive defense against modern Internet threats in real time.** Protects your computer from various types of known and unknown malware.
- ▶ **Web filter to block dangerous sites.** Web filter provides protection against visiting web sites which can pose danger or which reveal undesirable content. Thanks to regular database updates, web filter automatically blocks access to new unwanted sites.
- ▶ **Digital identity protection.** Smart protection system against phishing and **Virtual keyboard** securely protect your personal data when you shop online, chat in the social networks or operate your finances on the Internet.
- ▶ **Applications control which does not allow dangerous applications to harm the system.** Each application launched on a computer gets access to system resources and the Internet only after it has been checked against the regularly updated threats database.
- ▶ **System Watcher** monitors and analyzes all events that occur in the system. If an application is found malicious, the user can roll back all actions of such application in the system.
- ▶ **Safe Run for Applications and Web Sites** allows to launch suspicious applications and websites in the isolated virtual environment where they cannot harm the system.
- ▶ **Special tools to disinfect the most difficult infections.** Bootable CD-disk if you purchased the box version of an application, which contains tools for effective disinfection and system restoration in case of infection. If you loaded your Kaspersky Lab product from the Internet, you can create your own rescue disk with its help.
- ▶ **Gaming profile.** Special mode which optimizes protection settings for full-screen applications (games, presentations and etc), not affecting performance of a full-screen application or its operational speed. This mode also allows to automatically disable some KIS functions, notification service particularly.
- ▶ **Desktop gadget for quick access to the main application functions** allows to check the protection state of your computer and get quick access to the application settings and functions.
- ▶ Flexible and effective **Parental Control**.
- ▶ **Geo-filter** to block sites by regional domains.

#### What's new in Kaspersky Internet Security 2012

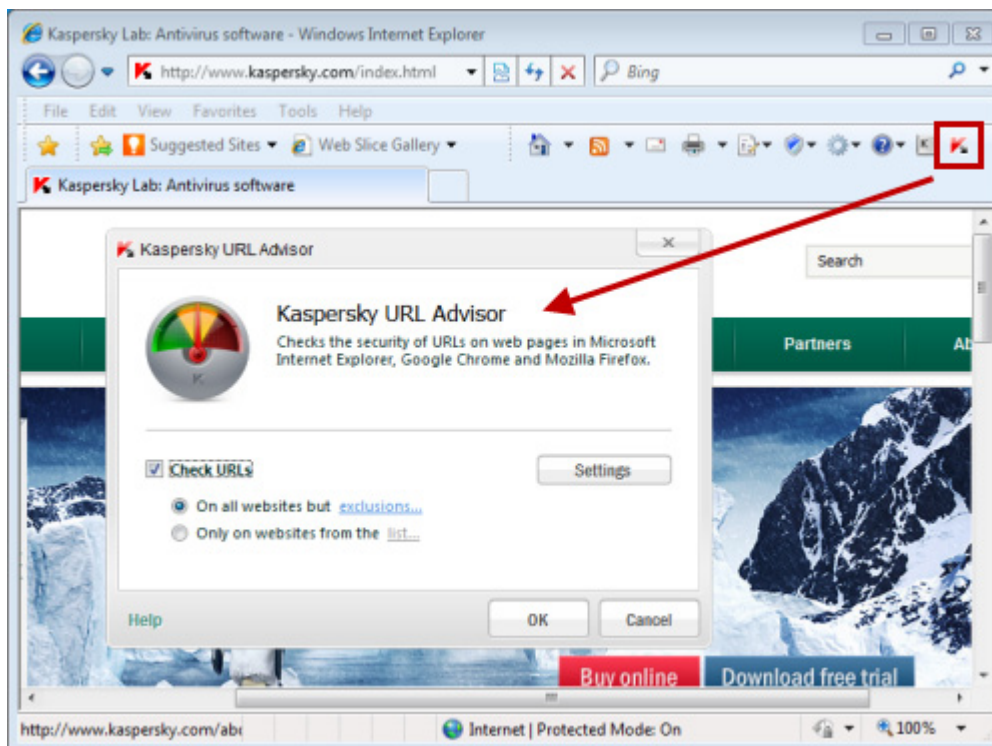
In this chapter we will view new and improved functionality of KIS 2012, as well as unique technologies that allow to protect your computer from the newly emerging threats, to provide smooth operation of your PC and to configure protection according to your needs.

## New functionality

### 1. Expanded URL Advisor compatibility with browsers

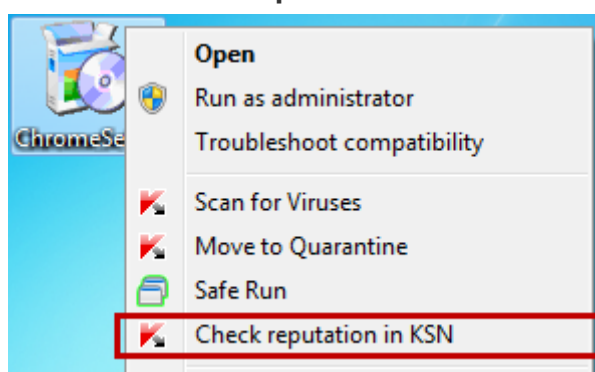
KIS 2012 features expanded **URL Advisor** compatibility with browsers. The following browsers are now fully supported:

- ▶ Internet Explorer 6, 7, 8 and 9
- ▶ Mozilla FireFox 2.x, 3.x and 4.x
- ▶ Google Chrome 7.x and 8.x



### 2. Checking reputation of suspicious files with a single mouse click

Now you can find out the reputation of any file with a single mouse click. To do this, right-click on the file icon and select **“Send reputation to KSN”** in the context menu.

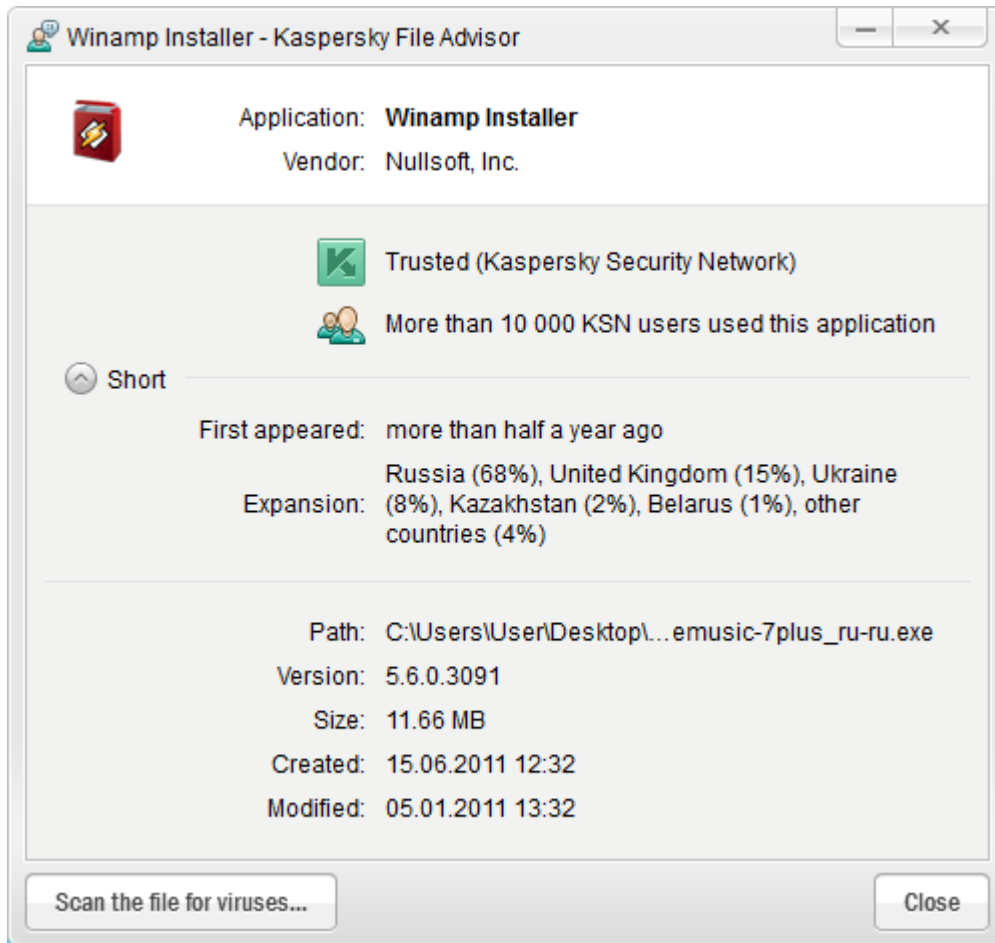


This is handy if, for example, you have downloaded a file from the Internet, but doubt its safety and want to quickly check its reputation.

This function provides information about the filename, size, date created and last modified, threat rating, digital signature, geography, distribution, and other users' level of trust. All these data are displayed in the Windows Browser or in the additional section in the scan window.

The main advantage of this feature is that **information is taken from the “cloud”**— the most up-to-date available data from **Kaspersky Security Network (KSN)** — global service

of the operative threats analyzer, which unites millions of users all over the world. This ensures that even newly appeared programs and files are safe.

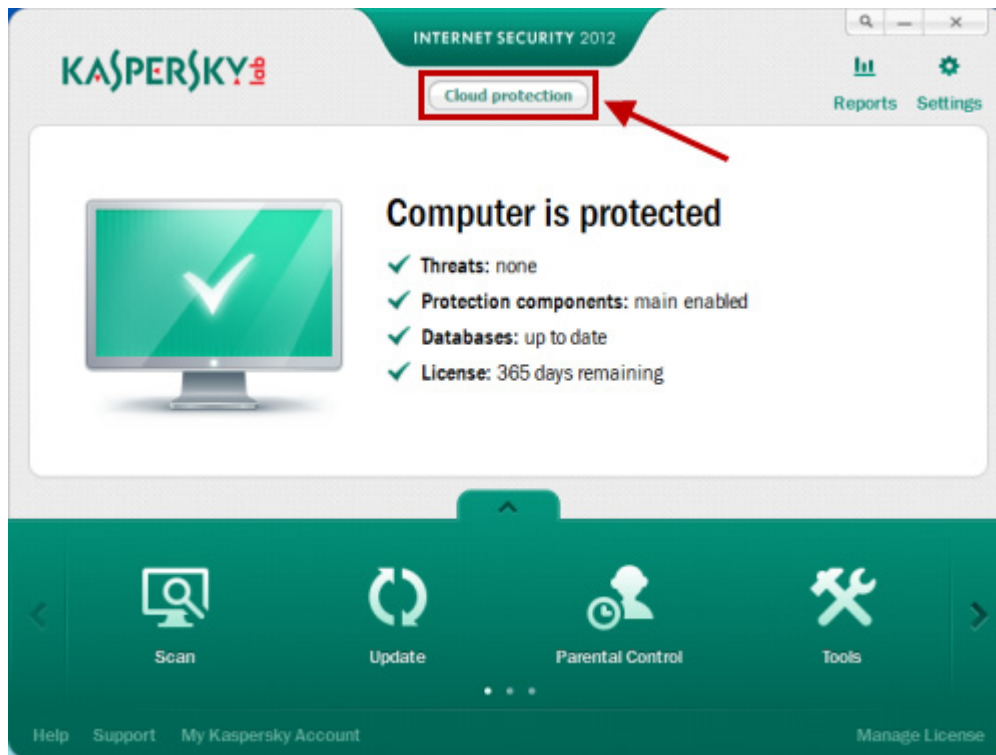


### 3. Visualization of “cloud” technologies

As mentioned above, in order to enhance efficiency of your computer protection, Kaspersky Internet Security 2012 uses data received from users all over the globe. **Kaspersky Security Network** collects the required data and provides the so-called protection from the “cloud”.

To guarantee that the “cloud” technologies are working effectively and that your computer is completely protected, “cloud” activity is displayed in the main window of KIS 2012. In addition, you have the option to see in more detail exactly which “cloud” components are operating at a given time and how they protect your computer and personal data.

For this, click the **Cloud protection** button in the main application window.



#### 4. Data collection on behavioral patterns of programs

KIS 2012 collects **data on the behavioral patterns of all programs you run**, and sends it to the “cloud”. The reputation of these programs is checked, and if the results indicate that a program is malicious, its behavioral pattern is added to Kaspersky Lab anti-virus databases. This allows other malicious programs with similar behavior to be blocked.

#### 5. Smart download of updates

KIS 2012 **downloads updates only for active components of the application**, which helps to minimize the number of updates and the time needed to download them. For example, if you have disabled Anti-Spam, KIS 2012 will not download updates for this component.



On activating a function/component, the application immediately starts downloading the relevant updates. This ensures up-to-date protection.

Furthermore, in automatic update mode KIS 2012 only runs update tasks 15 minutes after the computer has come out of sleep mode so as not to slow down the process of restoring the operating system.

## 6. Protection against spam using “cloud” technologies

To protect against spam, in addition to traditional methods (analysis of text, images), KIS 2012 utilizes the latest “cloud” technologies and heuristic analysis, which significantly increases the efficiency of spam recognition.

When KIS 2012 detects suspicious or unchecked data on the computer of a KSN participant, these data are automatically sent to **Kaspersky Lab**. Virus analysts analyze potential threats round the clock and release protection updates for users in real time, thus responding operatively to new spam deliveries.

## 7. No need to train Anti-Spam

Previous versions of KIS required users to train the **Anti-Spam** module with a certain number of messages before it could begin operation. In KIS 2012, **the Anti-Spam module does not require training** because it has access to a “cloud” database of sample spam messages.

## 8. New interface for maximum usability

In KIS 2012, significant changes have been made to the interface of the main window. The modern animated design facilitates the perception of information and makes it easy to run basic scenarios.

The main window now displays all necessary information on your computer’s protection status, the active defense components, the up-to-dateness of the anti-virus databases, and the license period. In addition, you can view recommendations on configuring various components and other actions, as well as check the activity of “cloud” technologies.

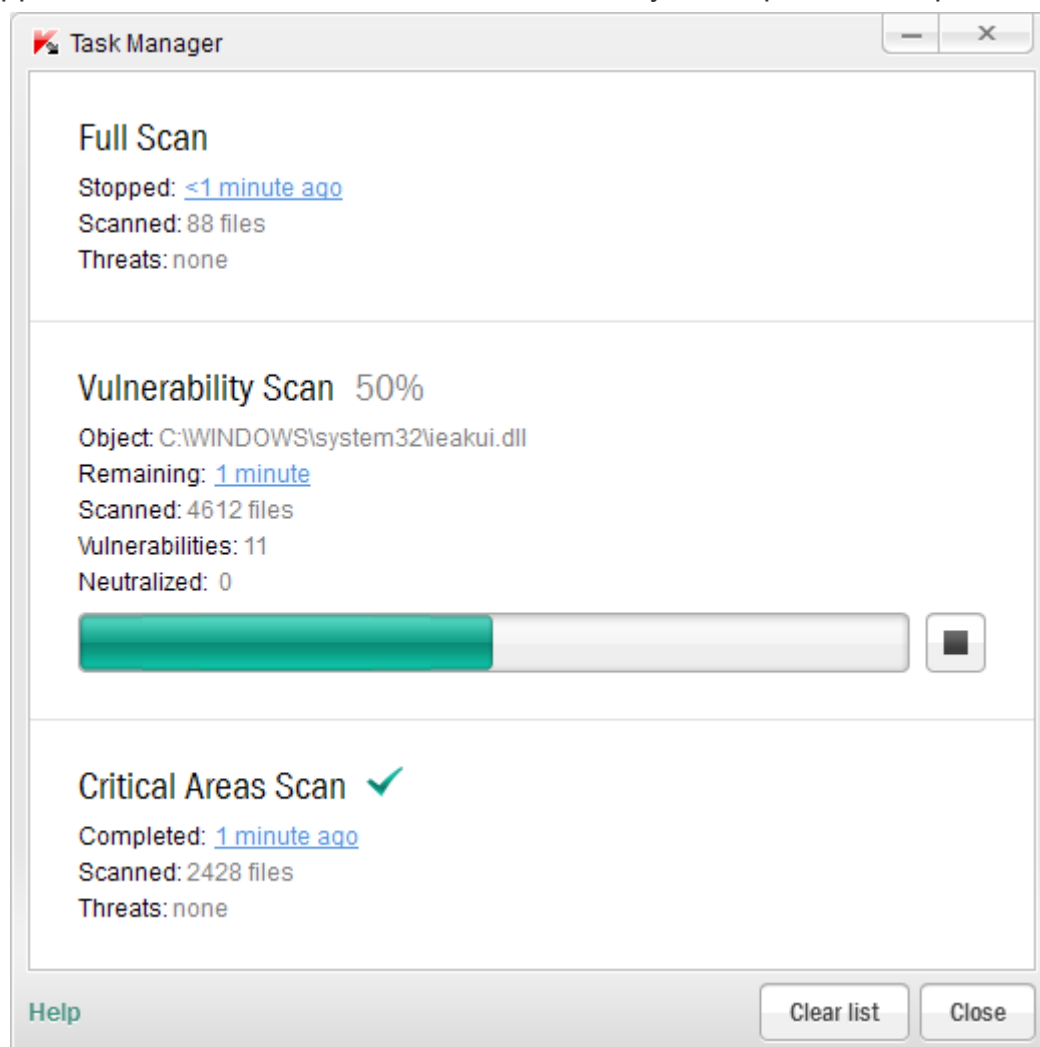


The KIS 2012 interface features a number of improvements:

- ▶ More convenient viewing of **Kaspersky Lab** news: simply click the **News** button in the main window. This brings up the list of news items directly in the main application window, rather than in the browser, as before.
- ▶ Touch-screen support makes the application easier to use on devices with such screens.
- ▶ The **Safe Run** environment is now accessible from the KIS 2012 window. This means you can quickly switch between safe and normal mode, and easily determine which mode is currently in use.
- ▶ The Welcome Page that greets you when you start the application informs you of the most important functions.
- ▶ Operating reports are now more graphic.

## 9. Task Manager

KIS 2012 includes a completely new function: It is now possible to view tasks executed by the application and review their status. This allows you to optimize computer resources.



### Improvements

#### 1. Removal of incompatible software during installation

For KIS 2012 to work correctly, there should be no third-party anti-virus products or firewalls on the computer.

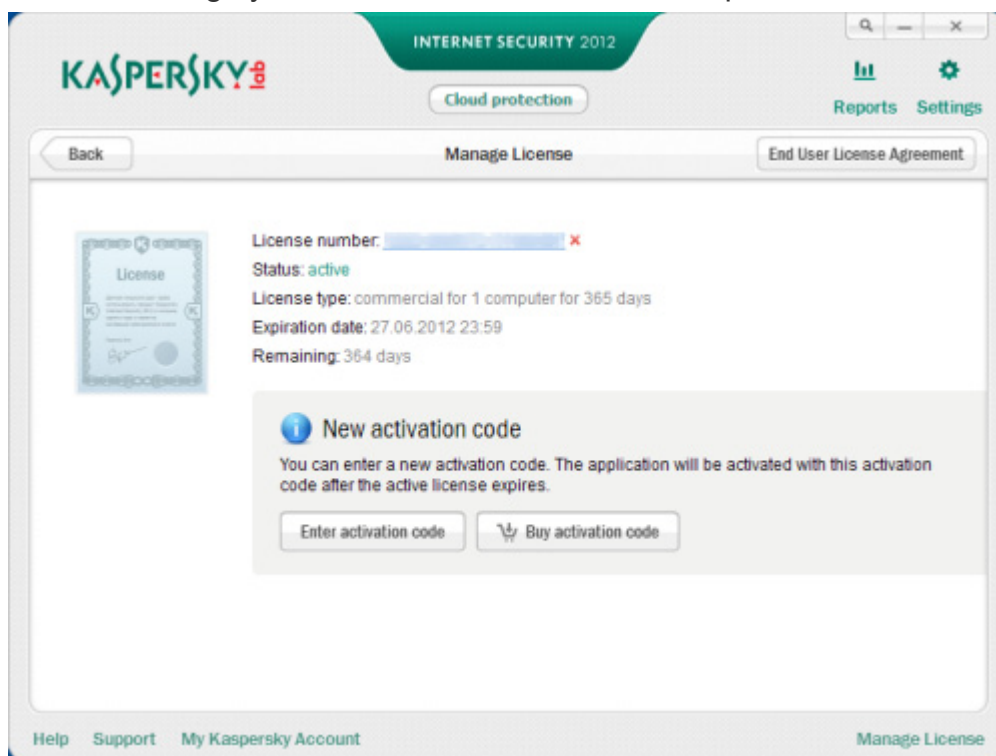


To avoid conflicts with similar software, during installation **KIS 2012** searches for products that **are incompatible with it and prompts the user to remove them**.

The new KIS 2012 features improved detection capabilities and proper removal of such products. In particular, the list of products incompatible with KIS has been expanded. In addition, **the list is now updated** with every release of KIS updates (new installation package). KIS 2012 can also automatically collect and send information about incompatible software detected on users' computers to **Kaspersky Lab** to be analyzed and added to the list.

## 2. Simplified activation and licensing procedures

KIS 2012 features a **greatly simplified procedure to activate the application**, purchase a new license, and switch from a trial version of the product to a commercial one. It is now much easier to manage your licenses—all actions can be performed in one window.



## 3. Protection against new, still unknown threats with System Watcher

Around 35,000 new pieces of malware appear every single day. They cannot be detected through traditional signature-based analysis alone, which means that methods of proactive defense are coming to the fore.

KIS includes **System Watcher**, a new technology that monitors all actions performed by programs running on the computer and compares the behavior of each program with the behavioral patterns of malware. This effectively identifies new suspicious and dangerous programs.

**System Watcher** has been revamped in KIS 2012:

- ▶ Information on actions committed by suspicious programs **is collected** not only within the current session, but also **during previous sessions**. This means that all actions performed by a program can be reversed if it is found to be malicious.
- ▶ Malware is detected on the basis of analysis of an even greater number of events.
- ▶ When a threat is detected, its harmful action on the computer is immediately blocked. The list of malicious actions that can be blocked in KIS 2012 has been significantly expanded.

**System Watcher** uses information collected by other components of the application (for example, **Proactive Defense**, **Email**, **Web** and **IM Anti-Virus**, **Firewall**), which significantly improves the capacity to detect new unknown threats.

#### 4. Rollback of malware actions

Proactive Defense can be used to track the actual behavior of programs running on the computer. Therefore, if a program is malicious, it is very important to be able to rollback all actions that it performs. KIS 2011 provides this function. In KIS 2012, the rollback of malware actions has been significantly revamped:

- ▶ It is now possible to **rollback malware actions** not only within the current session, but also during previous sessions.
- ▶ **The list of actions that can be rolled back has been expanded.** It now includes file creation, renaming and other modifications, changes to the system registry, and other actions. It also terminates processes started by malware, and restricts its network connections and etc.

Depending on the product settings, rollback of malware actions is done either automatically or with your permission.

In addition, you can specify the amount of space (by default, 20 MB) on the hard drive for storing the history of program activity, required to rollback malware actions.

#### 5. Detection of suspicious behavior

Previous versions of KIS implemented **technologies to analyze the behavior of programs**, including a comparison of their actions with the behavioral patterns of known malware.

In KIS 2012, this technology has been improved: now information about the behavior of programs running on users' computers is sent to **Kaspersky Lab**, where the data is analyzed and **matched against the reputation of these programs**.

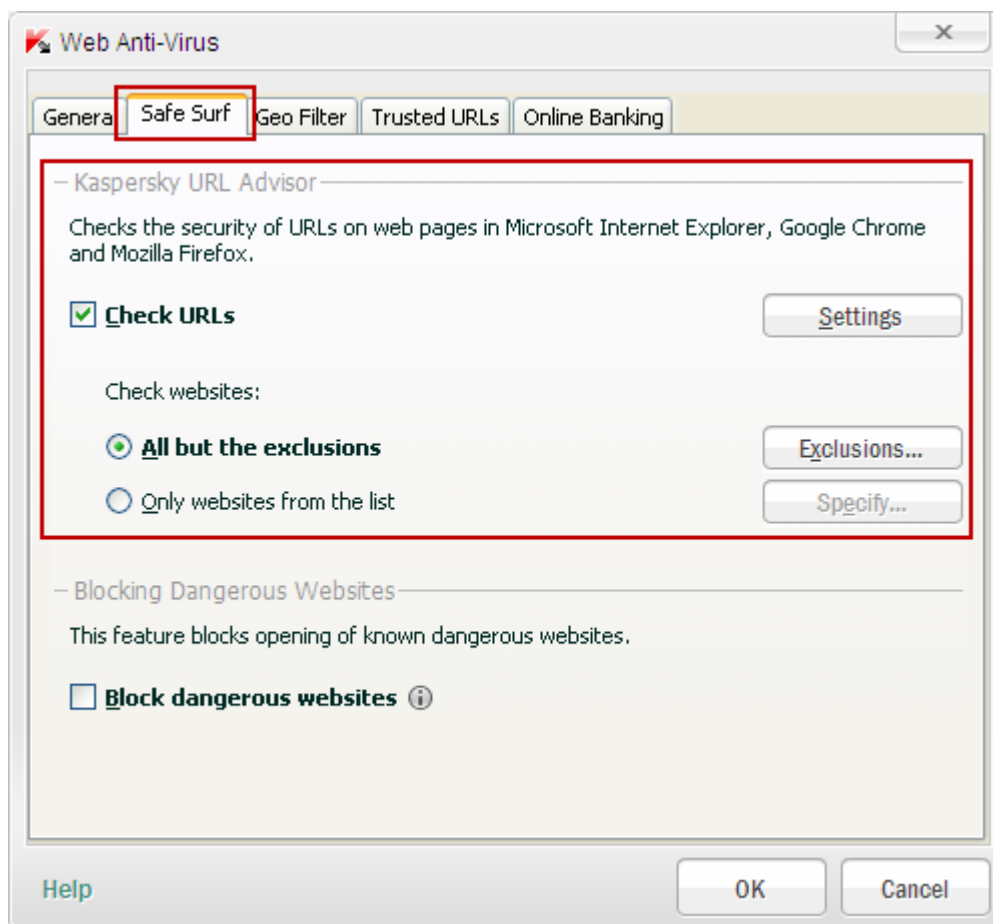
If a program performs an action that is characteristic of malware, its behavioral pattern is added to **Kaspersky Lab** anti-virus databases. This allows to react to new appearance of new threats ore operatively.

#### 6. Protection against phishing and harmful websites using URL Advisor

KIS 2012 includes the **URL Advisor** module, which informs you of links to suspicious or dangerous websites. The **URL Advisor** module is a toolbar for browsers. It flags links to infected or fraudulent (phishing) resources using a special color indicator.

Links can be scanned in two ways:

- ▶ All links on every web page are scanned.
- ▶ Lite mode: only the results of search engines and website searches are scanned.



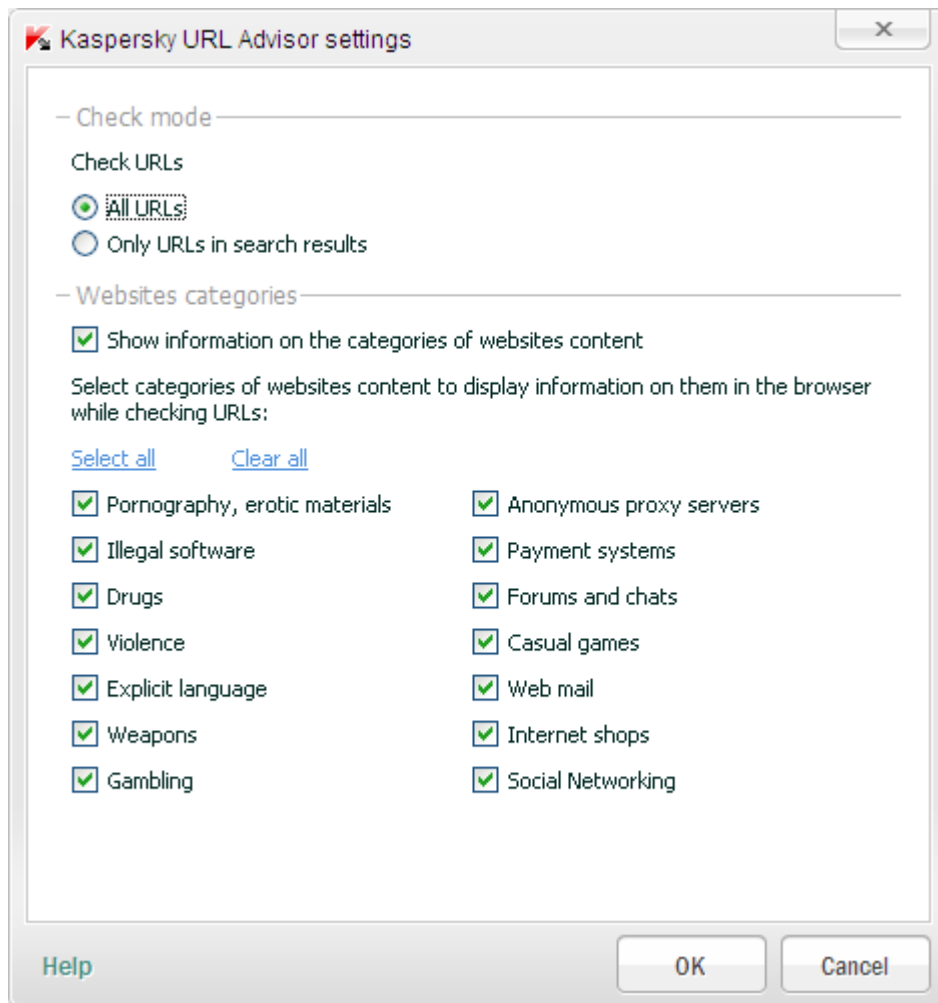
URL Advisor informs you of the potential danger posed by a website before you click the link.

The process of determining the level of danger utilizes information not only from **the database of malicious and phishing URLs** but also **from the databases located on Kaspersky Lab's servers** (the so-called "cloud").

The main improvements implemented in KIS 2012 include:

1. Additional information about online resources to help make the right decision about whether to visit a particular website.
2. Accumulated information in the "cloud" about online resources for a more precise definition of malicious and fraudulent (phishing) websites.
3. An expanded list of supported browsers.

Furthermore, **URL Advisor** allows you to specify unwanted categories of web sites (such as "pornography", "cruelty and violence").



## 7. Blocking of phishing websites using information from the “cloud” and heuristic analysis

Internet fraudsters often use phishing sites to gain access to users’ confidential data. To prevent theft of your personal data, significant improvements have been made in KIS 2012 to the detection of phishing sites using the very latest methods—“cloud” technologies and heuristic analysis.

“**Cloud**” technologies include **real-time updating of the online databases** of phishing and malicious websites stored on Kaspersky Lab’s servers. The main advantage of using “cloud” technologies is **real-time protection against newly emerging threats**.

**Heuristic analysis** checks information about every suspicious website (for example, whether the URL contains signs characteristic of phishing sites). If such signs are detected, the resource is assigned phishing status and access to it is blocked, even if it is not in the database of phishing websites.

Hence, information about the availability of a particular resource is first checked against the **local database of phishing websites**. Next, a **request is sent to the “cloud”**. If there is no information about the web resource in the “cloud”, **heuristic analysis** is carried out.

It is important that all these technologies work both for viewing websites in a browser and for communicating via an email or IM client (for example, ICQ, MSN).

## 8. Rapid response to new threats thanks to real-time threat rating

To increase the level of protection for your computer and personal data, **threat ratings** are computed based on analysis of program behavior and other statistical information.

To collect data about new software, KIS 2012 uses the “cloud” (**Kaspersky Security Network**) and the operating results of various product components, such as **Application Control**, **System Watcher**, **Heuristic Analyzer** and others.

“Cloud” protection is based on **Kaspersky Security Network** – a global service of real-time threats analysis, which unites millions of users all over the globe.



## 9. Accelerated performance

In the development of KIS 2012, substantial work was carried out to **improve the productivity of the program** and reduce its impact on system performance and other programs. In addition, the impact of KIS 2012 on system performance has been substantially optimized for the most common online user scenarios.

## 10. High performance on actively used PCs

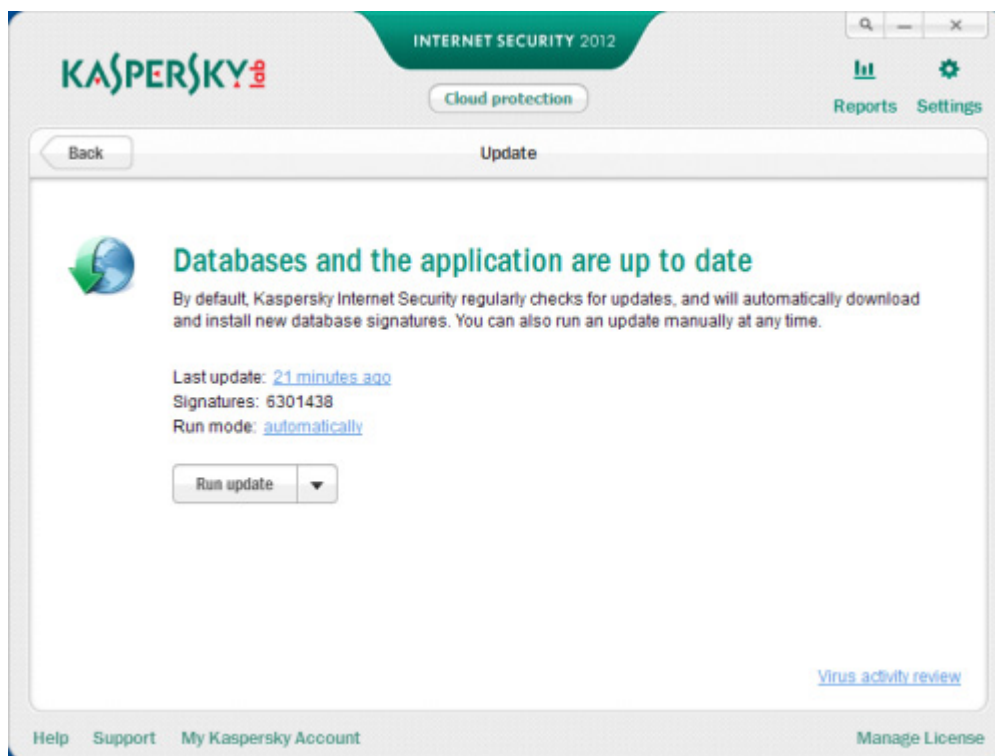
Particular attention is paid to the most common online user scenarios, such as:

- ▶ Watching movies, including high-resolution (HDTV), listening to the radio
- ▶ Searching and browsing websites
- ▶ VoIP (for example, Skype)
- ▶ Online games

Furthermore, in automatic update mode KAV/KIS 2012 only runs update tasks 15 minutes after the computer has come out of sleep mode so as not to slow down the process of restoring the operating system.

## 11. Quick installation of product updates

In KIS 2012, **the installation of product updates** (for example, patches or new versions) **has been greatly simplified**. Information about the release of new updates appears in the main window of KIS 2012. A pop-up message is also displayed on the computer screen.



## 12. Automatic update of anti-virus databases immediately after installation

Immediately after installation, the application starts to download database updates; this requires no action on your part.

## 13. Optimal use of computer resources in downloading updates

Due to the improved internal optimization of KIS 2012, **downloading updates is quicker and more efficient**. The update process does not interfere with the running of other programs, giving them priority in accessing the hard drive.

## 14. More effective threat detection

KIS 2012 features an **elevated level of threat detection**, confirmed by the results of tests carried out by reputable independent laboratories.

## 15. Application Control

Previous versions of KIS implemented a technology called **Application Control**, the primary purpose of which is **to restrict program access to computer resources and user data on the basis of the reputation scores** and threat ratings of these programs. “Cloud” technologies (KSN) are also employed in calculating the ratings.

**Application Control** has been revamped in KIS 2012: the application now checks the reputation of not only executable files but also application components (for example, DLL files).

## 16. Rootkit detection

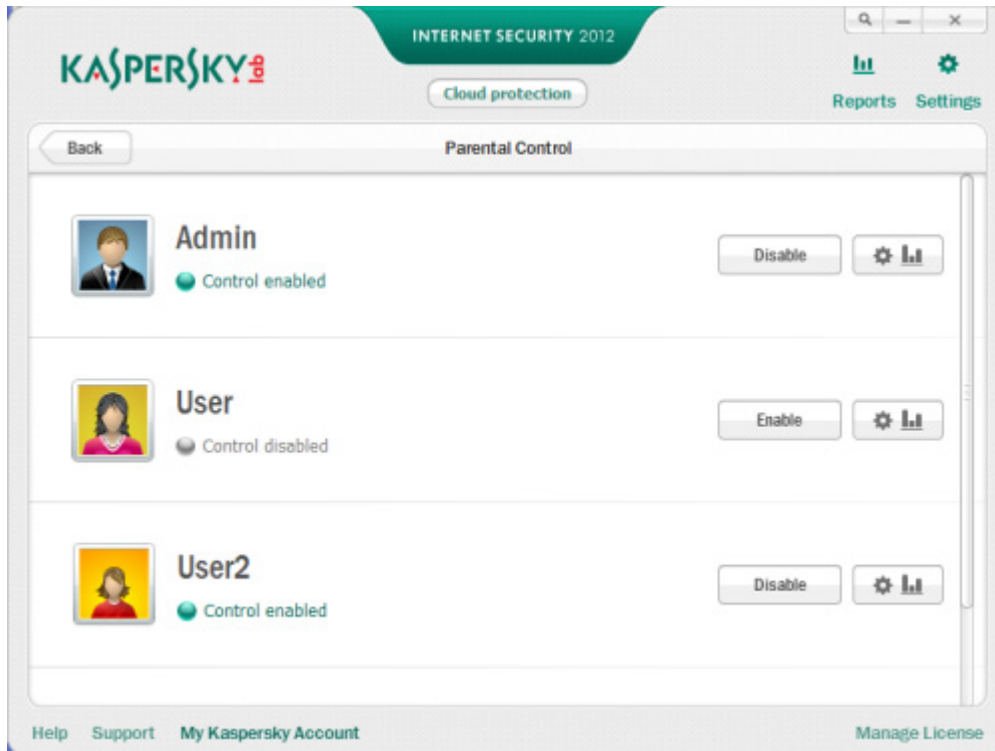
A **rootkit is a malicious program** or set of programs **designed to conceal the fact that a computer is infected**. It usually starts running before the operating system, modifies its setting, and neutralizes all standard methods of detecting infections. KIS 2012 contains specially improved technologies to detect rootkit activity.



## 17. Parental control

The **Parental Control** module in KIS 2011 features a set of unique and very important options for parents to restrict child access to the computer, covering all programs, games and the Internet.

In KIS 2012 the **Parental Control** module interface has been enhanced for increased ease of use.

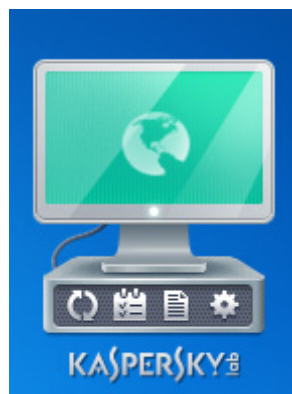


## 18. Enhanced desktop gadget

The appearance of gadget that provides quick access to the main application's functions has been changed in KIS 2012.

It now displays the status of scanned objects. For example, if a scan is being performed of some files or computer areas, an indicator appears in the gadget displaying the task execution status.

You can also configure buttons on the gadget for the functions you want to have quick access to.



## Distribution kit

You can purchase the boxed version of Kaspersky Internet Security from our resellers, or purchase it online from Internet shops, such as the **eStore** section of <http://www.kaspersky.com>.

If you buy the boxed version of the program, the package will include:

- ▶ A sealed envelope with the installation CD containing the program files and documentation in PDF format.
- ▶ If you buy a box version of Kaspersky Internet Security 2012, you can use your installation CD as a rescue disk.
- ▶ Brief User Guide with an activation code.
- ▶ License Agreement (depending on the region).

If you buy Kaspersky Internet Security 2012 from eStore, you will download the product from the **Kaspersky Lab** website. You will be sent an activation code by email after your payment has been received.

## Service for registered users

Kaspersky Lab offers legal users a set of services that allow increased efficiency of the application use.

When you purchase the license, you become a registered user, which entitles you to benefit from the following services:

- ▶ hourly updated application database and new product versions;
- ▶ advice on how to install, configure, and use the product - by phone or in the **My Kaspersky Account** service;
- ▶ notification of new software products released by **Kaspersky Lab** and new viruses emerging all over the world. This service is provided to users who have subscribed to Kaspersky Lab's news delivery on the Technical Support Service website (<http://support.kaspersky.com/subscribe>).

Advice on issues related to the functioning and use of operating systems, third-party software, and various technologies are not provided.